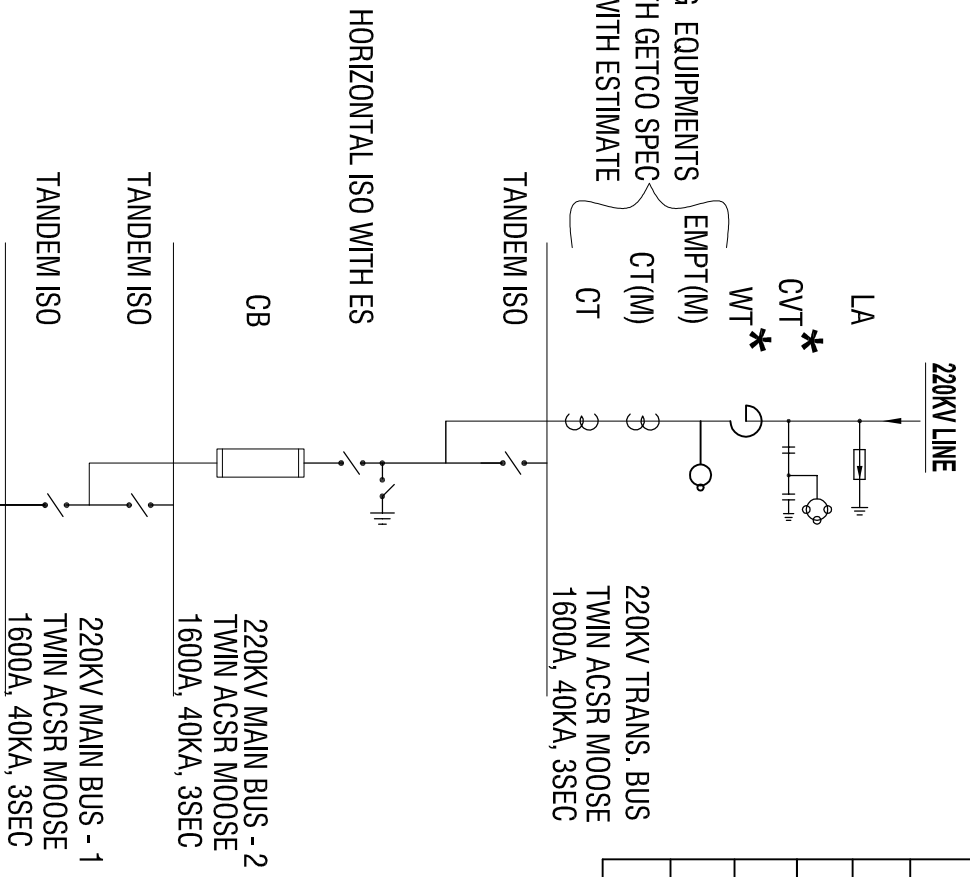


SINGLE CORE
TARIFF METERING EQUIPMENTS
COMPLYING WITH GETCO SPEC
CONVEYED WITH ESTIMATE



SYMBOL: - (220KV YARD)

| SL NO. | ITEM DESCRIPTION | SYMBOL |
|--------|---|--------|
| 1 | SURGE ARRESTOR (1-ph) 198KV, 10KA, CL-3 | |
| 2 | CAPACITOR VOLTAGE TRANSFORMER (1-ph) 4400 PF, $\frac{220KV}{\sqrt{3}} / \frac{110V}{\sqrt{3}} - \frac{110V}{\sqrt{3}}$ | |
| 3 | WAVE TRAP (1-ph) 0.5mH 1250A | |
| 4 | 220KV CURRENT TRANSFORMER (1-ph) 40KA, 3 SEC, 1200-600-300/1-1-1-1A | |
| 5 | ISOLATOR WITHOUT EARTH SWITCH (3ph) 1600A, 40KA, 3 SEC | |
| 6 | ISOLATOR WITH 1 EARTH SWITCH (3ph) 1600A, 40KA, 3 SEC | |
| 7 | CIRCUIT BREAKER 2000A, 40KA, 3 SEC. (3.ph) | |

- NOTE:
- LAYOUT PLAN & SECTIONAL VIEW SHALL BE DRAWN ACCORDINGLY. PRINCIPLE APPROVAL OF SLD, PLAN, SECTION & PROTECTION SLD SHALL HAVE TO BE OBTAINED FROM GETCO
 - *CVT & WT ARE TO BE PROVIDED FOR -S/C LINE :-R & Y PHASE
 - D/C LINE :- R PHASE OF EACH LINE
 - TARIFF METERING EQUIPMENTS SHALL COMPLY WITH GETCO SPEC CONVEYED WITH ESTIMATE.
 - EARTH SWITCH SHALL BE ON LINE SIDE.
 - ALL THE EQUIPMENTS RELATED TO THE ESTIMATE SERVED SHALL BE PROCURED AS PER GETCO SPECIFICATIONS. THE INDIVIDUAL APPROVAL FOR EACH EQUIPMENT SHALL HAVE TO BE OBTAINED FROM GETCO, IF CONSUMER IS DEVIATING FROM STANDARD SPECIFICATIONS.

GUJARAT ENERGY TRANSMISSION CORPN.LTD.
S.P.VIDYUT BHAVAN, RACE COURSE,
VAODDARA - 390 007

STANDARD SINGLE LINE DIAGRAM OF
220KV SUB-STATION AT CONSUMER END OF EHT DEPOSIT SCHEME

| | | | | |
|------|----------------------------------|------------|---------------------|--------|
| REV: | DESCRIPTION: | DATE: | DRG. NO.: | SHEET: |
| R0 | FIRST PREPARATION DT. 05-01-2010 | 19/01/2010 | 28 - STD / P - 002A | 1 OF 1 |
| R1 | AS PER SET(LOC) COMMENT | | | |
| REV: | | | | |